



Women's Aid Orkney

wish to thank the following funders for their support

Scottish Government

Orkney Islands Council

Lloyds TSB Foundation for Scotland

The Nationwide Foundation

The Robertson Trust

The Henry Smith Foundation

Orkney Childcare Partnership

Domestic Abuse Forum

*A charitable company limited by guarantee. Registered in Scotland No. SC246914
Registered Office: 18 Queen Street, Kirkwall, KW15 1JE
Registered Scottish Charity No SC005241*

Women's Aid Orkney

Annual Report



2007-2008

*A charitable company limited by guarantee. Registered in Scotland No. SC246914
Registered Office: 18 Queen Street, Kirkwall, KW15 1JE
Registered Scottish Charity No SC005241*

Chief Executive's Report



2007-2008 saw some challenging times and some fantastic achievements for Women's Aid Orkney (WAO). The service became a victim of its own success having grown from what effectively started off as a one woman helpline, to a thriving office based service, outreach provision and of course, the refuge.

Along with growth and development came increasing pressures on funding and service sustainability. That's where Voluntary Action Orkney (VAO) came in. We have been given constitutional delegated authority by WAO directors to help to manage the service through this period of expansion. There is a core of WAO directors who act as a steering group of the VAO board to ensure decision making is robust and fit for purpose. Changes have been made to streamline services making them more efficient, effective and accessible for our users. We no longer have an office so the refuge is the base for all outreach and specialist residential services and staff are able to offer a flexible approach and respond to need as it arises. In addition, this year the Respect Programme was delivered to children and young people in Orkney. This is a great piece of work focusing on healthy relationships for our future generations.

Towards the end of the financial year, funding posed the biggest challenge, which we were able to overcome. I would like to take this opportunity to thank our stakeholders, directors, staff, volunteers and funders for their unfailing commitment to the continuation of Women's Aid Orkney. It is only with their help, support and dedication that we are able to continue to keep families safe.

Gaynor Jones

Future Plans

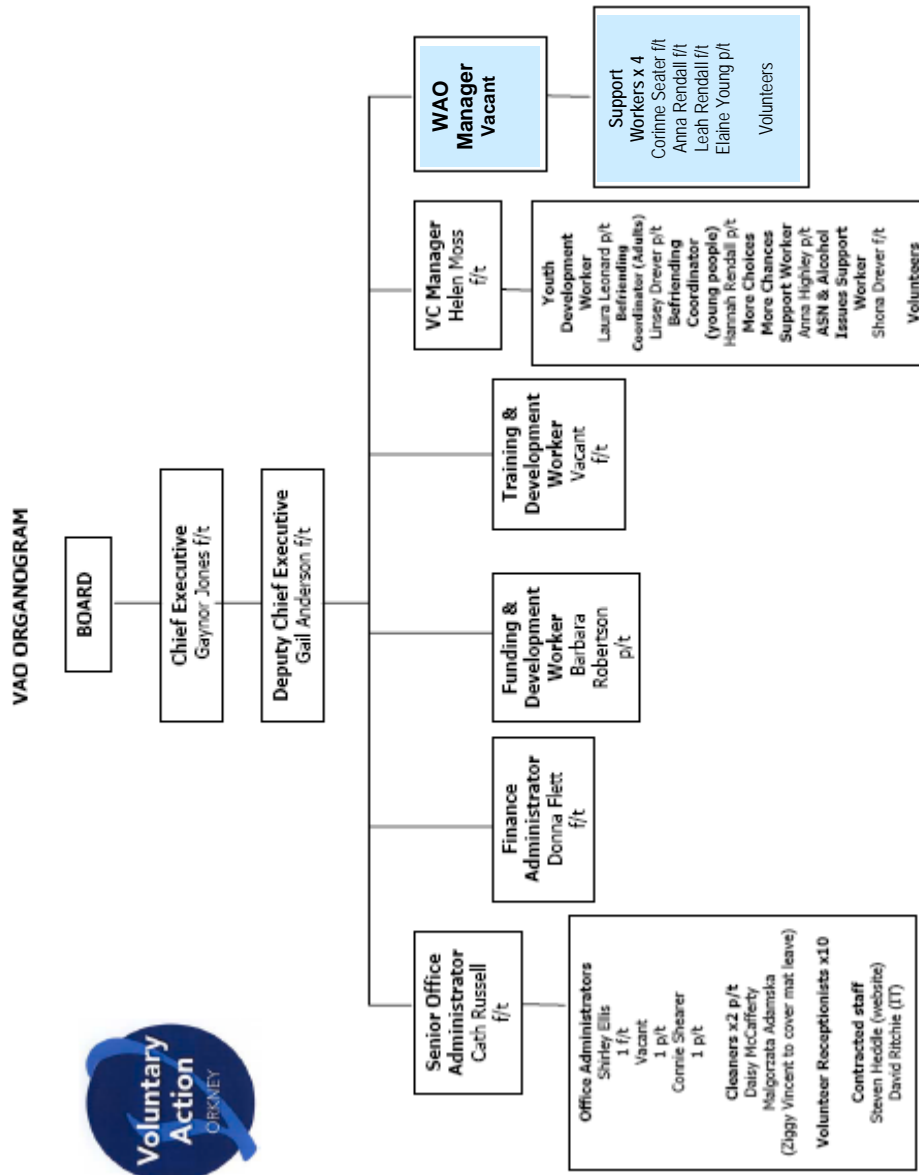
To ensure best use of resources the Queen Street office has been closed and the four support staff are now based in the refuge. Work schedules have been revised to enable staff to provide a generic, flexible service, including emergency out of office hours 'on call'.

During this period of considerable change all staff have maintained their commitment and enthusiasm and continued to deliver essential services to those who are affected by domestic abuse.

Plans for 2008-09 include:

- *Establish regular group activities for women*
- *Recruit additional staff*
- *Increase awareness of domestic abuse issues through presentations and dissemination of materials, particularly to the isles*
- *Establish an interactive website to reach children and young people particularly in the isles*
- *Extend the Respect Programme to all primary and secondary schools*
- *Continue to establish and develop effective working relationships with a range of partner agencies*
- *Set up a volunteer programme*
- *Increase membership*

VAO Structure



"The objects for which the company is established are to educate the public on the subject of domestic violence and abuse and to develop services to relieve suffering due to domestic abuse"

Memorandum of Association.

Women's Aid Orkney works to National Care Standards and Codes of Practice and the refuge and outreach services are regularly inspected by the Care Commission. This year their report was very positive with special mention of the fact that the organisation is committed to and values client input.

Phoenix House

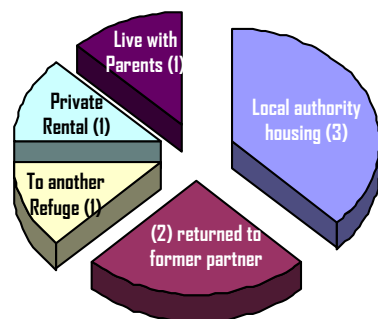
Phoenix House continues to provide safe, secure accommodation for women, children and young people in crisis. There are four self contained flats available, one of which has been adapted to meet the needs of women or children with disabilities. In addition to providing a protective environment, support staff offer practical and emotional support, advice and assistance to suit the needs of residents.

"I've never been in such a nice place"

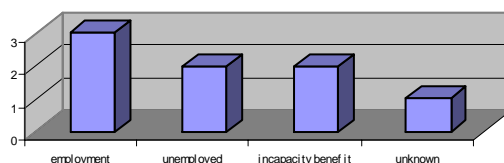
Following severe flooding in in October 2006, the Refuge was closed until June 2007. Although the accommodation service was disrupted, support services continued with all staff operating from the Queen Street office.

Since reopening in June 2007 the refuge has accommodated and supported 8 families. All of whom have now moved on:

Destination on Leaving the Refuge



Employment Status on Leaving the Refuge



Outreach

In addition to refuge facilities women continue to receive services at a place and time that suits them. This includes support to those who have left the refuge or those who wish to remain in the community. The dedicated outreach worker left the organisation in February 2008 but staff continued to provide the service. Over the year there were 8 new outreach clients taking the total receiving support to 23.

"You're all like angels"

Finance

WOMEN'S AID ORKNEY

STATEMENT OF FINANCIAL ACTIVITIES INCLUDING INCOME AND EXPENDITURE ACCOUNT FOR THE YEAR ENDED 31 MARCH 2008

	Notes	Unrestricted funds £	Restricted funds £	Total 2008 £	Total 2007 £
Incoming resources from generated funds					
Donations and legacies	2	16,382	176,731	193,113	225,681
Activities for generating funds	3	-	12,839	12,839	16,645
Investment income	4	1,140	517	1,657	1,309
Total incoming resources		17,522	190,087	207,609	243,635
Resources expended					
Costs of generating funds					
Costs of generating donations and legacies		-	-	-	1,025
Fundraising trading: costs of goods sold	3	-	-	-	331
		-	-	-	1,356
Net incoming resources available		17,522	190,087	207,609	242,279
Charitable activities					
Support to women and children		11,898	234,747	246,645	213,884
Governance costs		-	1,799	1,799	2,147
Total resources expended		11,898	236,546	248,444	217,387
Net incoming/(outgoing) resources before transfers					
		5,624	(46,459)	(40,835)	26,248
Gross transfers between funds		(15,500)	15,500	-	-
Net (expenditure)/income for the year/ Net movement in funds		(9,876)	(30,959)	(40,835)	26,248
Fund balances at 1 April 2007		33,239	83,634	116,873	90,625
Fund balances at 31 March 2008		23,363	52,675	76,038	116,873

The statement of financial activities also complies with the requirements for an income and expenditure account under the Companies Act 1985.

A copy of the examined accounts is available on request

Partnerships

Getting it Right for Every Child (GIRFEC) and involvement in the development of the Orkney Integrated Children's Service Plan has led to more effective joint working with other agencies and a more structured and collaborative approach to service delivery.

Directors

L Drever	(resigned 16 July 2007)
G Ferguson	(appointed 2 August 2007)
G Jones	(resigned 9 July 2007)
D Kirkland	(resigned 19 July 2007)
F Lillie	(appointed 26 July 2007)
R MacDonald	(resigned 13 July 2007)
L Shearer	
S Sulat	(resigned 19 July 2007)
A Sutherland	(resigned 6 July 2007)

Staff

Fiona Tully	Co-ordinator (left 31 March 2008)
Paula Williamson	Outreach Worker (left February 2008)
Anna Rendall	Women's Support Worker
Leah Rendall	Children/Young People Support Worker
Corinne Seatter	Women's Support Worker
Elaine Young	Children/Young People's Support Worker
Lydia Hardcastle	Administrator (left 31 March 2008)
Wipawan Wayne	Cleaner (left 31 March 2008)
Nina Mowat	volunteer



Anna Rendall



Corinne Seatter



Elaine Young



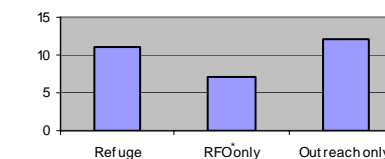
Leah Rendall

Children and Young People's (CYP) Support Workers

There are two CYP workers, one who supports children and young people in the community and one who supports children and young people living, or who have lived, in Phoenix House.

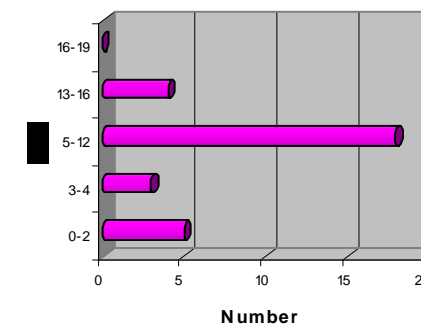
Both support workers deliver services through one to one or group sessions and use an individualised support plan for each child or young person. The support ranges from work on feelings, self esteem, behaviour and relationships, to help with homework or attending after school clubs. Children and young people also have access to support by telephone and email.

Number of CYP Accessing
Different Support



*RFO: refuge/follow on

CYP by Age



In addition, with funding from Orkney Childcare Partnership, children and young people have joined with their peers to take part in outings and activities.

This has enabled the provision of opportunities for positive interactions with those who have been through the same experience and provides group work activities to children and young people of similar ages and abilities. The outcomes for those involved in this have included an increase in their confidence, feeling more included and less isolated and a realisation that the other children and young people are, in the words of one child, *“just like me”*.

To ensure that the service is delivering to a high standard, the support workers have developed a tool kit to effectively monitor and evaluate their work. The tool kit has been praised by the Scottish Government and Scottish Women’s Aid and both agencies have promoted elements as a model for others to adopt.

An important feature of the service has been the involvement of children and young people in defining their own support plans and setting their own goals.

Respect

Staff have been trained to deliver the Respect Programme, which uses a preventive approach to stop violence against women and children before it occurs. It is aimed at both Primary P6/P7 age groups and Secondary aged pupils and is delivered over eight one hour sessions.



The programme covers bullying, co-operation, power and domestic abuse. This has become a vital part of the work to address issues about and raise awareness of domestic violence. Over the year the programme has been delivered to 2 Schools, 84 children and young people, with very positive responses from the children and education staff.

*“I’ve changed my
view of what
Respect means”*

*“Respect covers some
of my worries”*

Triple ‘P’ (Positive Parenting Programme)

Staff have been involved in multi agency training, for example the Triple ‘P’ parenting programme organised by the Orkney Childcare Partnership. During the year staff assisted delivery of 6 two hourly sessions to four families. Triple ‘P’ offers suggestions and ideas to help parents build positive relationships with their children.

